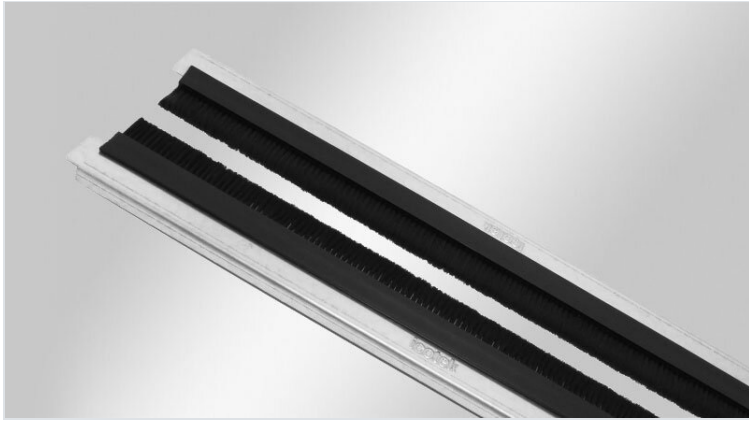


# KDR-BES / KDRS-BES-U | Split base plates with brush strips

for Rittal TS 8 & VX25 enclosures



The 2-piece enclosure base plates are supplied with preassembled brush strips.

The gland plates are installed with standard Rittal clips / screws.

Depending on the maximum cable diameter to be routed, the 2 halves of the brush base plate are aligned further or closer to each other.

The base plates are perfect for protection of the enclosure interior against dirt.

RoHS  
compliant

REACH  
COMPLIANCE

Made in  
Germany

## Specifications

<b>Material</b>	Base plate: Steel, zinc plated Brushes: Polyamide
<b>Operating temperature</b>	-20 C° to 90 C°
<b>Properties</b>	silicone free, halogen free

## Advantages & Benefits

- During assembly, almost the complete base of the enclosure can be used for installation of cables
- Subsequent assembly possible

## Product Types & Sizes

**KDR-BES-TS8-600-58000**



Part No.	<b>58000</b>	Sight size of	<b>435 mm</b>
EAN	<b>4251269315787</b>	base opening	
Package quantity	<b>1</b>	Suitable for enclosure	<b>Rittal TS 8</b>
Length	<b>458 mm</b>		
Width	<b>125 mm</b>		
Height	<b>16 mm</b>		
For enclosure width	<b>600 mm</b>		

**KDR-BES-TS8-800-58006**



Part No.	<b>58006</b>	Sight size of	<b>635 mm</b>
EAN	<b>4251269315</b>	base opening	
	<b>794</b>	Suitable for	<b>Rittal TS 8</b>
Package quantity	<b>1</b>	enclosure	
Length	<b>658 mm</b>		
Width	<b>125 mm</b>		
Height	<b>16 mm</b>		
For enclosure width	<b>800 mm</b>		

**KDR-BES-TS8-1000-58012**



Part No.	<b>58012</b>	Sight size of	<b>835 mm</b>
EAN	<b>4251269315</b>	base opening	
	<b>800</b>	Division bar	<b>no</b>
Package quantity	<b>1</b>	Suitable for	<b>Rittal TS 8</b>
enclosure			
Length	<b>858 mm</b>		
Width	<b>125 mm</b>		
Height	<b>16 mm</b>		
For enclosure width	<b>1.000 mm</b>		

**KDR-BES-TS8-1200-58018**

Part No.	<b>58018</b>	Sight size of	<b>495 mm</b>
EAN	<b>4251269315</b>	base opening	
	<b>817</b>	Suitable for	<b>Rittal TS 8</b>
Package quantity	<b>1</b>	enclosure	
Length	<b>518 mm</b>		
Width	<b>125 mm</b>		
Height	<b>16 mm</b>		
For enclosure width	<b>1.200 mm</b>		



**KDRS-BES-U-VX25-1000 (50mm)**

Part No.	<b>58032</b>	Division bar	<b>yes</b>
EAN	<b>4251269328</b>	Brush height	<b>50 mm</b>
	<b>923</b>	For wall thickness	<b>2,5 - 3 mm</b>
Package quantity	<b>1</b>	Suitable for enclosure	<b>Rittal VX25</b>
Length	<b>438 mm</b>		
Width	<b>16 mm</b>		
For enclosure width	<b>1.000 mm</b>		
Sight size of base opening	<b>402 mm</b>		



**KDRS-BES-U-VX25-1200 (50mm)**



Part No.	<b>58033</b>	Division bar	<b>yes</b>
EAN	<b>4251269328</b>	Brush height	<b>50 mm</b>
	<b>930</b>	For wall thickness	<b>2,5 - 3 mm</b>
Package quantity	<b>1</b>	Suitable for enclosure	<b>Rittal VX25</b>
Length	<b>538 mm</b>		
Width	<b>16 mm</b>		
For enclosure width	<b>1.200 mm</b>		
Sight size of base opening	<b>502 mm</b>		

**KDRS-BES-U-VX25-600 (50mm)**



Part No.	<b>58030</b>	Brush height	<b>50 mm</b>
EAN	<b>4251269328</b>	For wall thickness	<b>2,5 - 3 mm</b>
	<b>909</b>	Suitable for enclosure	<b>Rittal VX25</b>
Package quantity	<b>1</b>		
Length	<b>488 mm</b>		
Width	<b>16 mm</b>		
For enclosure width	<b>600 mm</b>		
Sight size of base opening	<b>452 mm</b>		

**KDRS-BES-U-VX25-800 (50mm)**

Part No.	<b>58031</b>	Brush height	<b>50 mm</b>
EAN	<b>4251269328</b>	For wall thickness	<b>2,5 - 3 mm</b>
Package quantity	<b>1</b>	Suitable for enclosure	<b>Rittal VX25</b>
Length	<b>688 mm</b>		
Width	<b>16 mm</b>		
For enclosure width	<b>800 mm</b>		
Sight size of base opening	<b>652 mm</b>		



---

**icotek**<sup>®</sup>  
smart cable management